



MASALTA®



PARTS MANUAL
WALK-BEHIND POWER TROWEL
MT36 MT42 MT46 SERIES

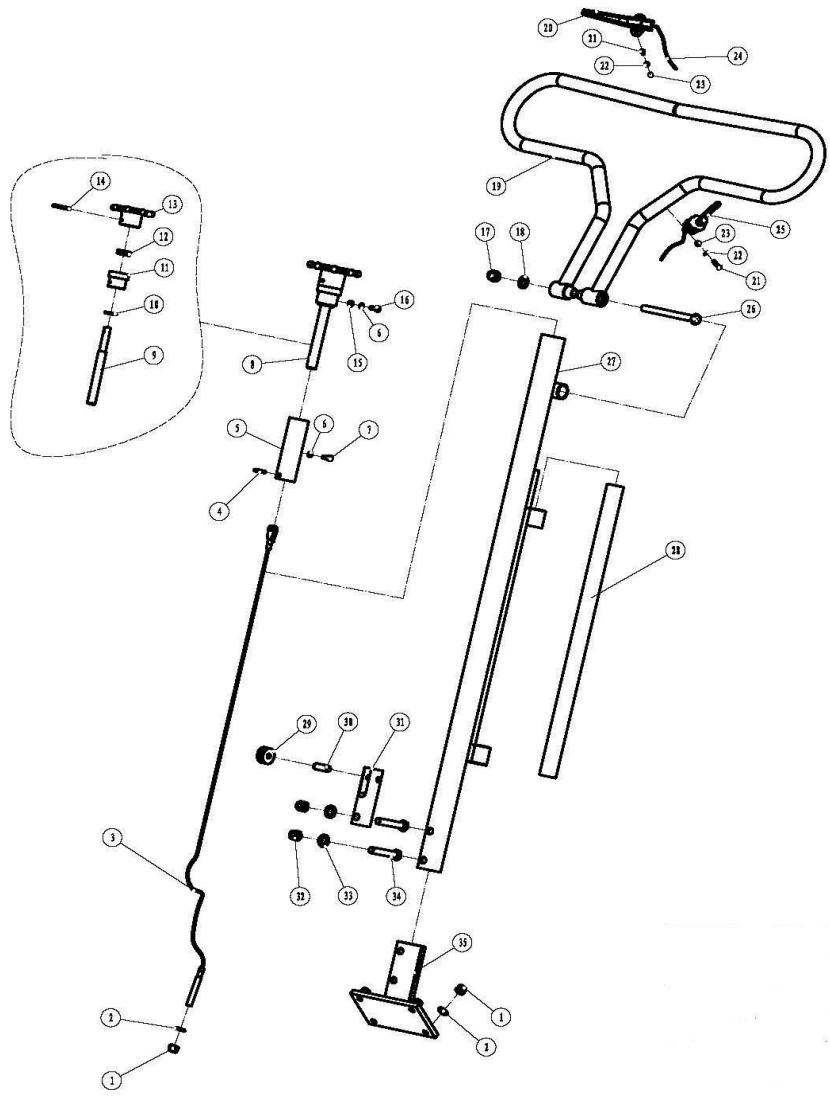


PARTS LIST GENERAL
MT36/MT42/MT46

MT36、42、46-BOM00-A


ITEM NO.	PART NO.	DESCRIPTION	QUANTITY	REMARK	ERP NO.
A	MT36	HANDLE ASSY. FOR MT36	1		
	MT42. 46	HANDLE ASSY. FOR MT42/MT46	1		
B	MT36	MAIN BODY ASSY., MT36	1		
	MT42	MAIN BODY ASSY., MT42	1		
	MT46	MAIN BODY ASSY., MT46	1		
C	MT36. 42. 46	REDUCING MECHANISM	1		
D	MT36	SPIDER PLATE ASSY., MT36	1		
	MT42	SPIDER PLATE ASSY., MT42	1		
	MT46	SPIDER PLATE ASSY., MT46	1		
E	MT36	TROLLEY WHEEL	1		

MT36, 42, 46-BOM01-A



A

B

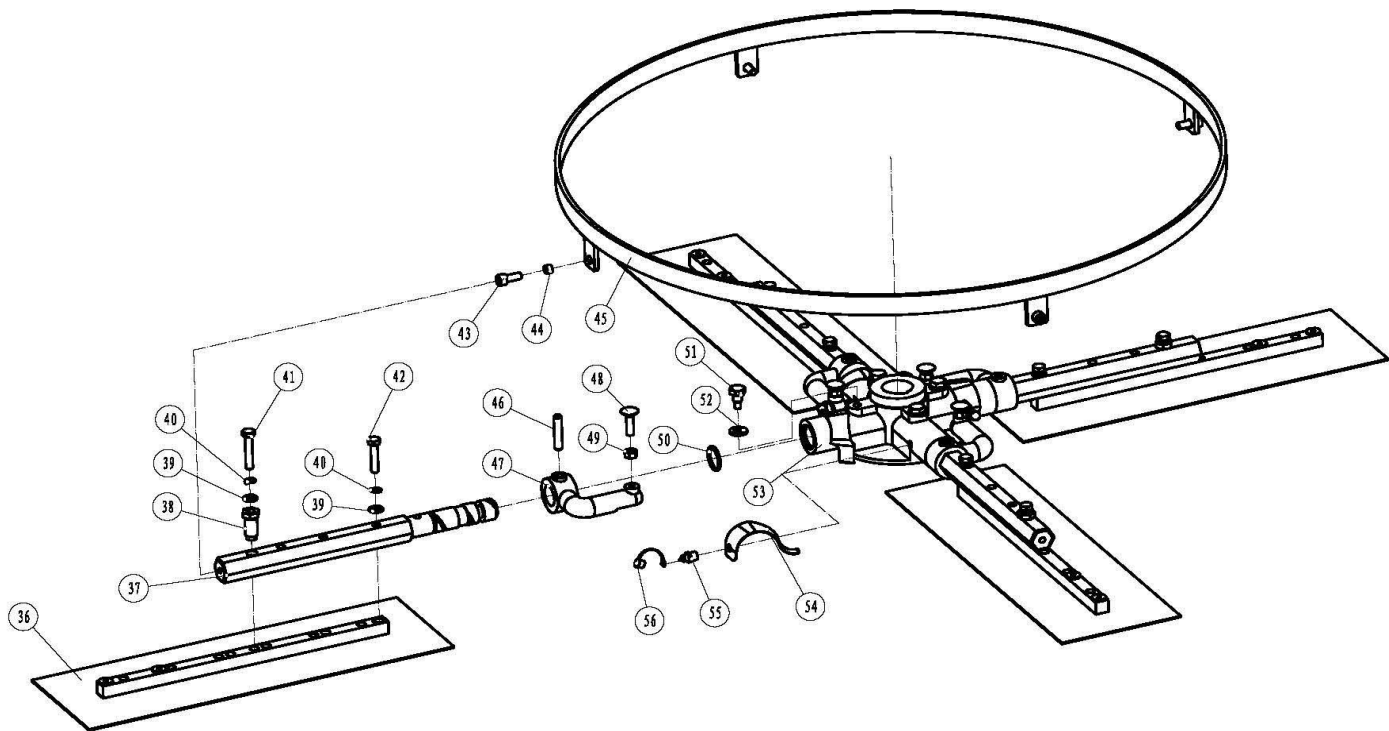
MASALTA® 
MT36, 42, 46-BOM01-A

PARTS LIST 1
MT36/MT42/MT46

MT36、42、46-BOM01-A

ITEM NO.	PART NO.	DESCRIPTION	QUANTY	REMARK	ERP NO.
1	GB889.1-M10	LOCK SCREW Φ 10	5		20405006
2	GB97.1-10	WASHER Φ 10	5		20501009
3	MT36-05-03-02	WIRE.MT36	1		40101069
	MT42.46-05-03-02	WIRE.MT42/46	1		21399004
4	GB879-5 \times 35	PIN	1		20802110
5	MT36.42.46-05-03-01	SCREW	1		40706007
6	GB93-6	SPRING WASHER	2		20509004
7	GB70.1-M6 \times 8	NUT	1		20306049
8	MT36-05-02-00	TROWEL CONTROL ASSY.	1		54601125
9	MT36-05-02-03	BOLT	1		40401055
10	GB97.1-14	SPACER	1		20501012
11	MT36.42.46-05-02-02	COLLAR	1		40504143
12	GB301-51103	BEARING	1		21009005
13	MT36-05-02-01	WHEEL, HAND HANDLE	1		41405017
14	GB879-5 \times 45	PIN	1		20802109
15	GB97.1-6	WASHER 6	1		20501005
16	GB5783-M6 \times 12	BOLT	1		20102051
17	GB923-M12	NUT	1		20415008
18	GB97.1-12	WASHER 12	1		20501024
19	MT36.42.46-05-06-04W	MT ROUND HANDLE ASSY.	1		40305109
20	MT36-05-06-05W	SAFETY STOP SWITCH ASSY	1		54601013
21	GB818-M5 \times 25	SCREW	3		20301056
22	GB97.1-5	WASHER 5	3		20501021
23	GB889.1-M5	LOCK SCREW M5	3		20405021
24		CABLE ASSY.	1		54601161
25	MT36.42.46-05-07-01	TROLLEY CONTROL ASSY.	1		41403069
26	GB5782-M12 \times 130	BOLT M12	1		20101115
27	MT36-05-01-00	HANDLE LEVER (MT36)	1		54601008
	MT42.46-05-01-00	HANDLE LEVER (MT42、46)	1		54601016
28	MT36-05-01-06	LIFT ROD (MT36)	1		40408006
	MT42.46-05-01-06	LIFT ROD (MT42、46)	1		40408010
29	MT36-05-03-04	PULLEY	1		41405019
30	GB119-10 \times 35	PIN	1		20801006
31	MT36.42.46-05-03-03	PULLEY TRACKET	1		40203315
32	GB889.1-M12	LOCK SCREW M12	2		20405007
33	GB97.1-12	WASHER 12	2		20501010
34	GN5782-M12 \times 70	BOLT M12 \times 70	2		20101099
35	MT36-05-04-01	JUNCTION PLATE	1		40201085

MT36, 42, 46-BOM02-A



MASALTA®



MT36, 42, 46-BOM02-A

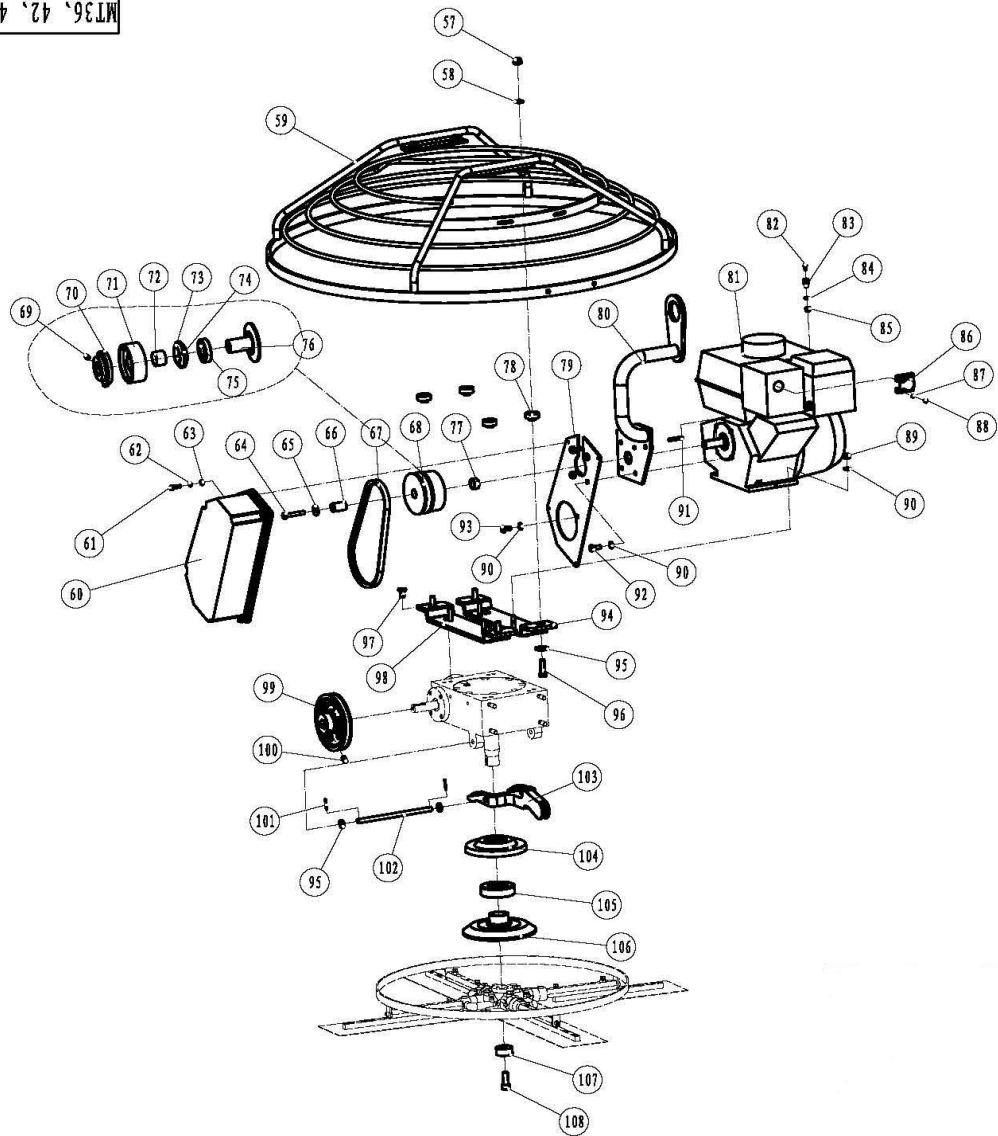
PARTS LIST 2

MT36/MT42/MT46

MT36、42、46-BOM02-A


ITEM NO.	PART NO.	DESCRIPTION	QTY	REMARK	ERP编号
36	MT36-04-00-11	BLADE, MT36	4		40302070
	MT42-04-00-11	BLADE, MT42	4		40302080
	MT46-04-00-11	BLADE, MT46	4		40302079
37	MT36-04-00-07	TROWEL ARM EXTENDED, MT36	4		40101060
	MT42.46-04-00-07	TROWEL ARM EXTENDED, MT42 & MT46	4		40101073
38	MT36-04-00-08	BOLT FOR ADJUSTING BLADE M14*1.0	4		40401053
39	GB97.1-8	SPACER	8		20501007
40	GB93-8	SPRING WASHER	8		20509006
41	5/16-18UNF×50	SCREW	4		20109021
42	5/16-18UNF×38	SCREW	4		20109022
43	GB70.1-M8×20	SCREW M8X20 (MT42、46)	4		20306122
44	MT42.46-04-00-14	ALU. SLEEVE (MT42、46)	4		40504151
45	MT42.46-04-00-12	OUTER RING (MT42、46)	1		40507046
46	GB879-8x45	PIN	4		20802254
47	MT36-04-00-09	ROLL PIN	4		40301077
48	GB14-M8x30	BOLT M8X30	4		20110021
49	GB6170-M8	I TYPE NUT M8	4		20401004
50	GB3452.1-24x3	O RING	4		21101020
51	MT36-04-00-06	BOLT	4		40401054
52	GB97.1-10	WASHER 10	4		20501009
53	MT36-04-00-04	SPIDER PLATE ONLY	1		40302069
54	MT36-04-00-10	SPRING STRIP	4		40201081
55	GB11152-M10x1	CUP	4		20426027
56	Φ 6	CUP COVER	4		41201127

MT36, 42, 46-BOM03-A



A

B

MASALTA® 
MT36, 42, 46-BOM03-A

PARTS LIST 3
MT36/MT42/MT46

MT36、42、46-BOM03-A

ITEM NO.	PART NO.	DESCRIPTION	QTY	REMARK	ERP编号
57	GB889.1-M10	LOCK SCREW M10	4		20405006
58	GB97.1-10	WASHER 10	4		20501009
59	MT36-01-00-00	PROTECTIVE RING ASSY. (MT36)	1		40302067
	MT36-01-00-00B	PROTECTIVE FRAME MT36	1		40302068
	MT42-01-00-00	PROTECTIVE RING ASSY. (MT42)	1		54601017
	MT46-01-00-00	PROTECTIVE RING ASSY. (MT46)	1		54601015
60	MT36-06-00-03	BELT GUARD (MT36)	1		40301075
	MT42.46-06-00-03	BELT GUARD (MT42、46)	1		40206118
61	GB70.1-M6×20	SCREW M6X20 (MT36)	4		20306069
	GB70.1-M6×25	SCREW M6X25 (MT42、46)	4		20306077
62	GB93-6	SPRING WASHER 6	4		20509022
63	GB97.1-6	WASHER 6	4		20501023
64	GB5783-M8×50	BOLT (S)	1	DIAMETER AXLE Φ 20、Φ 25	20102110
	GB5783-M8×55	BOLT (S+LIFTING HOOK)	1	DIAMETER AXLE Φ 20、Φ 25	20102111
	5/16-24×38	BOLT (Q ENGINE)	1	DIAMETER AXLE Φ 19.05	20109036
	7/16-20×25	BOLT (Q ENGINE)	1	DIAMETER AXLE Φ 25.4	20109030
65	Φ 8×Φ 30×3	LARGE WASHER (MT36)	1		20504011
	Φ 8×Φ 40×3	LARGE WASHER (MT42、46)	1		20519009
66	MT36-02-00-07G	PIPE FOR CLUTCH (S ENGINE)	1	DIAMETER AXLE Φ 20	41004010
	MT36-02-00-07Y	PIPE FOR CLUTCH (Q ENGINE)	1	DIAMETER AXLE Φ 19.05	41004012
	MT42.46-02-00-07G	PIPE FOR CLUTCH (S ENGINE)	1	DIAMETER AXLE Φ 25	40705038
67	Φ 13×660	A-BELT (MT36)	1		21201158
	A650	BELT A650 (MT36)	1	ROBIN EY20	82202013
	Φ 13×710	A-BELT (MT42、46)	1		21201161
68	MT36-02-00-00G	CLUTH ASSY. (S ENGINE)	1	DIAMETER AXLE Φ 20	54601002
	MT36-02-00-00Y	CLUTCH ASSY. (Q ENGINE)	1	DIAMETER AXLE Φ 19.05	54601105
	MT42.46-02-00-00G	CLUTCH ASSY. (S ENGINE)	1	DIAMETER AXLE Φ 25	54601103
	MT42.46-02-00-00Y	CLUTCH ASSY. (Q ENGINE)	1	DIAMETER AXLE Φ 25.4	54601104
69	GB78-M8×16	HEX HEAD SCREW	1		20312009
70	MT36-02-00-04	CLUTH DRIVING DISC (MT36)	1		40201075
	MT42.46-02-00-04	CLUTH DRIVING DISC (MT42.46)	1		40201083
71	MT30.36-02-00-02	FOLLOWER OF CLUTCH (MT36)	1		40201074
	MT42.46-02-00-02	FOLLOWER OF CLUTCH (MT42.46)	1		40201077
72	MT30.36-02-00-03	SLEEVE OF FOLLOWER (MT36)	1		40504152
	MT42.46-02-00-03	SLEEVE OF FOLLOWER (MT42,46)	1		40504135
73	MT36-02-00-05	CLUTCH BLOCK	4		40705036
74	MT36-02-00-06	CLUTCH SPRING	1		40103049
75	6007-2RS	BEARING 6007-2RS	1		21001042
76	MT36-02-00-01G	CLUTCH DRIVING WHEEL (MT36 S ENGINE)	1	DIAMETER AXLE Φ 20	40201073
	MT36-02-00-01Y	CLUTCH DRIVING WHEEL (MT36 Q ENGINE)	1	DIAMETER AXLE Φ 19.05	40201084
	MT42.46-02-00-01G	CLUTCH DRIVING WHEEL (MT42.46 S ENGINE)	1	DIAMETER AXLE Φ 25	40201076
	MT42.46-02-00-01Y	CLUTCH DRIVING WHEEL (MT42.46 Q ENGINE)	1	DIAMETER AXLE Φ 25.4	
	MT36-06-00-04G	CLUTCH ADJUSTING SLEEVE (MT36 S ENGINE)	1	DIAMETER AXLE Φ 20	40504134

PARTS LIST 3
MT36/MT42/MT46

MT36、42、46-BOM03-A

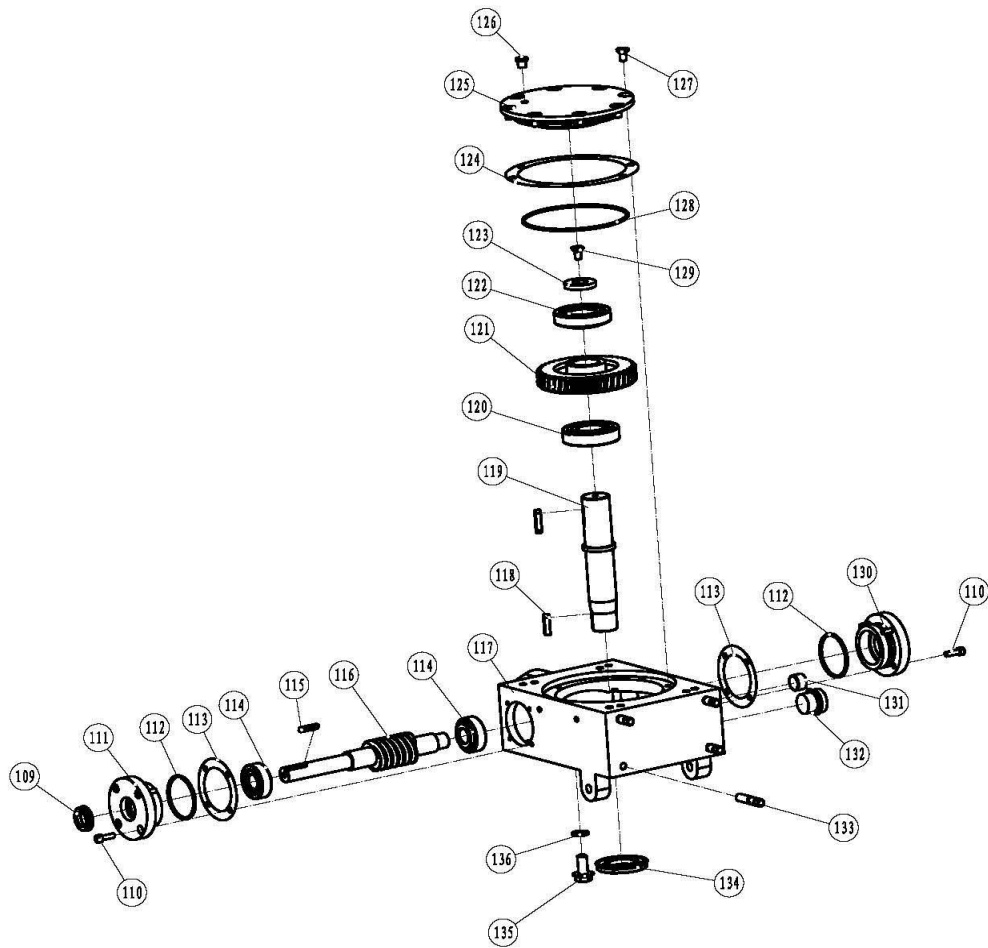
ITEM NO.	PART NO.	DESCRIPTION	QTY	REMARK	ERP编号
77	MT36-06-00-04Y	CLUTCH ADJUSTING SLEEVE (MT36 Q ENGINE)	1	DIAMETER AXLE Φ 19.05	40504160
	MT42.46-06-00-04G	CLUTCH ADJUSTING SLEEVE (MT42.46 S ENGINE)	1	DIAMETER AXLE Φ 25	40504136
		CLUTCH ADJUSTING SLEEVE (LONG) (SUITABLE FOR LIFTING HOOK)	1		40504161
78	MT36-11-01-01	VIBRATION DAMPER	4		41201126
79	MT36-06-00-02	MOUNTING PLATE, BELT GUARD (MT36)	1		40206102
	MT42.46-06-00-02G	MOUNTING PLATE, BELT GUARD (MT42.46)	1	DIAMETER AXLE Φ 25	40204089
	MT42.46-06-00-02Y	MOUNTING PLATE, BELT GUARD (MT42.46)	1	DIAMETER AXLE Φ 25.4	40204077
80	MT36-B-DG	LIFTING HOOK (MT36)	1		54601098
	MT42.46-DG	LIFTING HOOK (MT42.46)	1		54601095
	MT42.46-Y	LIFTING HOOK (MT42.46)	1		54601096
81	GX160H1-SX	HONDA	1	DIAMETER AXLE Φ 20	41401013
	GX160UT2-SX4	HONDA	1		41401001
	EX17	ROBIN	1		41401024
	EY20	ROBIN	1		41401029
	GX200U-SM14	HONDA	1		41401012
	GX160H1-QX	HONDA	1	DIAMETER AXLE Φ 19.05	41401014
	GX160UT2-QX4	HONDA	1		41401002
	G200F	LONCIN	1		41401042
	GX270H-SH	HONDA	1	DIAMETER AXLE Φ 25	41401016
	EX27	ROBIN	1	41401025	
	GX270U-QA2	HONDA	1	DIAMETER AXLE Φ 25.4	41401003
	GX270H QXHQ	HONDA	1		41401072
	270F	LONCIN	1		41401095
82	GB818-M3×8	CROSS RECESS HEAD SCREW (STEEL)	1	NOT FOR ROBIN AND LOCIN ENGINE	20301010
83	MT36-05-07-02	BOLT	1		40203310
84	GB97.1-5	WASHER 5 (STEEL)	1		20501021
85	GB889.1-M5	LOCK SCREW M5 (STEEL)	1		20405021
86	MT36-11-04-01	GUIDE COVER (MT36)	1		40204074
	MT42.46-11-04-01	GUIDE COVER (MT42.46)	1		40204076
87	GB93-4	SPRING WASHER 4 (MT36)	2		20509001
88	GB818-M4×8	CROSS RECESS HEAD SCREW (MT36)	2		20301001
	GB12618-3.2×7	RIVET (MT42.46)	3		20705003
89	GB889.1-M8	LOCK SCREW M8	4		20405004
90	GB97.1-8	FLAT WASHER	4	20501007	
	GB96.1-8	BIG WASHER	4	20504003	
91		KEY	1	WITH ENGINE	
92	GB5783-M8×20	HEXAGONAL BOLT	4	FOR S ENGINE AND LOCIN ENGINE	20102101
	GB5783-M8×25	HEXAGONAL BOLT (SUITABLE FOR LIFTING HOOK)	4	FOR S ENGINE AND LOCIN ENGINE	20102102
	5/16-24x20	HEX BOLT (Q ENGINE)	4	FOR Q ENGINE NOT INCLUDING LOCIN ENGINE	20109033
	5/16-24x25	HEX BOLT (Q ENGINE) (SUITABLE FOR LIFTING HOOK)	4	FOR Q ENGINE NOT INCLUDING LOCIN ENGINE	20109031
93	GB5783-M8×16	HEX HEAD SCREW	1		20102116
	GB5783-M8×20	HEX HEAD SCREW (SUITABLE FOR LIFTING HOOK)	1		20102101
94	MT36-06-01-02	RIGHT PLATE ASSEMBLY (MT36)	1	DIAMETER AXLE Φ 19.05、Φ 20	54601131

PARTS LIST 3
MT36/MT42/MT46

MT36、42、46-BOM03-A

ITEM NO.	PART NO.	DESCRIPTION	QTY	REMARK	ERP编号
94	MT42.46-06-01-02	RIGHT PLATE ASSEMBLY (MT42,MT46)	1	DIAMETER AXLE Φ 25、Φ 25.4	54601134
95	GB96.1-10	BIG WASHER	6		20504005
96	GB5783-M10×35	HEX HEAD SCREW	4		20102155
97	GB70.3-M10×20	SUNK SCREW	4	DIAMETER AXLE Φ 19.05、Φ 20	20308147
	GB70.3-M10×20	SUN SCREW	8	DIAMETER AXLE Φ 25、Φ 25.4	20308147
98	MT36-06-01-01	LEFT PLATE ASSEMBLY (MT36)	1	DIAMETER AXLE Φ 19.05、Φ 20	54601130
	MT42.46-06-01-01	LEFT PLATE ASSEMBLY(MT42, MT46)	1	DIAMETER AXLE Φ 25、Φ 25.4	54601133
99	MT36-06-00-01	PULLEY	1		40607048
100	GB78-M8×16	HEX HEAD SCREW M8	1		20312009
101	GB91-2.5×16	PIN	2		20805005
102	MT36-05-05-02	PIN FOR FORK	1		40102022
103	MT36-05-05-01	FORK	1		40101059
104	MT36-04-00-01	BEARING PLATEN	1		40503033
105	MT36-04-00-02 (51209)	BEARING 51209	1		21012012
106	MT36.42.46-04-00-05	BLADE PLATEN	1		40503032
107	MT36-04-00-05	WASHER	1		41201125
108	GB70.1-M12×30 12.9	SOCKET CAP SCREW	1		20306014

MT36, 42, 46-BOM04-A



MASALTA®

MT36, 42, 46-BOM04-A

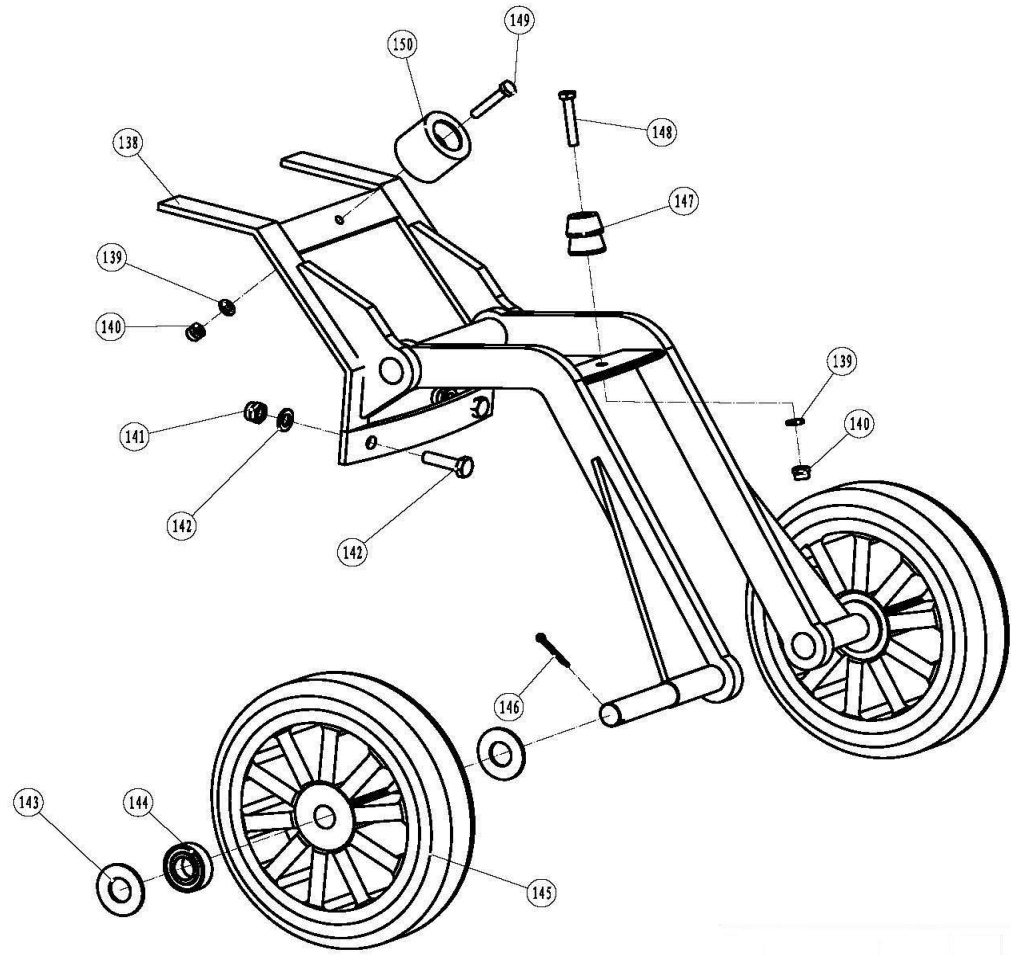
PARTS LIST 3

MT36/MT42/MT46

MT36、42、46-BOM04-A

ITEM NO.	PART NO.	DESCRIPTION	QTY	REMARK	ERP编号
109	GB13871-TC20×32×7	SEAL	1		21106038
110	GB70.1-M6×20	SOCKET CAP SCREW	8		20306048
111	MT36-03-00-05	FLANGE, INPUT SHAFT	1		40503034
112	GB3452.1-55×3	O-RING	2		21101021
113	MT36-03-00-06	PLATE, SEAL	2		40504141
114	GB297-32204	BEARING	2		21007005
115	GB1096-5×30	KEY	1		20901055
116	MT36-03-00-07	GEAR, WORM & SHAFT ASSY.	1		40405008
117	MT36.42.46-03-00-01	CASE, GEAR	1		40901047
118	GB1096-8×30	KEY A	2		20901163
119	MT36-03-00-09	TURBOSHAFT	1		40403016
120	GB276-6207-2RS	BEARING 6207	1		21001086
121	MT36-03-00-08	GEAR, WORM	1		40605001
122	GB297-30207	BEARING 30207	1		21007004
123	MT36-03-00-10	WAHSER	1		40504139
124	MT36-03-00-03	WASHER (BIG)	1		40504140
125	MT36-03-00-02	TOP COVER	1		40201082
126	MT36-03-00-11	VENT VALVE	1		40402068
127	GB70.3-M8×16	SOCKET CAP SCREW	8		20308110
128	GB3452.1-130×3	O-RING	1		21101019
129	GB70.3-M8×20	SOCKET CAP SCREW	1		20308111
130	MT36-03-00-04	COVER	1		41201128
131	ZG1/2	HEXAGONAL HEAD PLUG	1		21102004
132	GB1160.2-M27×1.5	OIL GAUGE	1		21110007
133	GB901-M10×40	DOWEL SCREW	4		20110019
134	GB13871-TC35×54×8	O-RING	1		21106040
135	JB1000-M12×1.25	OUTER HEXAGONAL PLUG	1		21103006
136	JB1002-12	COPPER PAD	1		21105007

MT36-BOM05-A



A

B

MASALTA® 
MT36-BOM05-A

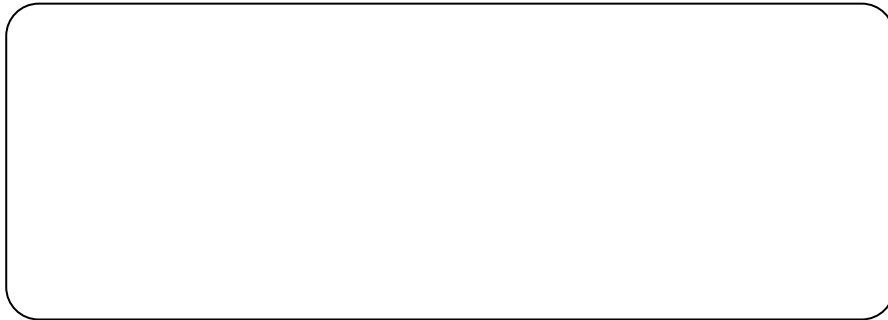
PARTS LIST 5
MT36/MT42/MT46

MT36-BOM05-A

ITEM NO.	PART NO.	DESCRIPTION	QTY	REMARK	ERP编号
137		WHEEL STAND	1	FOR MT36	40101088
138	GB97.1-6	FLAT WASHER	2		20501005
139	GB889.1-M6	LOCK NUT M6	2		20405002
140	GB889.1-M8	LOCK NUT M8	2		20405004
141	GB97.1-8	FLAT WASHER	2		20501007
142	GB5783-M8×25	HEXAGONAL HEAD BOLT	2		20102102
143	35×18×3	FLAT WASHER	4		20519010
144	GB276-6003-2RS	BEARING	4		21001085
145	φ 200×φ 15×56	WHEEL	2		41405019
146	GB91-3.2×36	PIN	2		20805050
147		RUBBER LOCATING BLOCK	1		41105018
148	GB5783-M6×25	HEXAGONAL HEAD BOLT	1		20102055
149	GB70.1-M6×30	SOCKET HEAD SCREW	1		20306058
150		RUBBER LOCATING BLOCK	1		41105019



Distributed By



MASALTA ENGINEERING CO., LTD

Add: Weisi Road, Baohe Industrial Estate, Hefei, China
Tel: 86-551-4846600, 4846601 Fax: 86-551-4846616
E-mail: sales@masalta.com.cn, masalta@mail.hf.ah.cn,
[Http://www.masalta.com.cn](http://www.masalta.com.cn)